

# TILE CONTRACTORS ASSOCIATION OF HAWAII

## Construction Industry Pledge to Avoid COVID-19 on Construction Sites



### The Commitment of Hawaii's Construction Industry: Our Pledge to Avoid the Spread of COVID-19 on Hawaii's Construction Sites

**Whereas**, Hawaii's construction industry has been defined as an essential business by the State of Hawaii, with further guidance provided by the City and County of Honolulu, the County of Maui, the County of Kauai and the County of Hawaii; and

**Whereas**, Hawaii's construction industry is unique in that workspaces are closed to the public, often outdoors or with access to fresh air; and

**Whereas**, Hawaii's construction industry prioritizes the health and safety of its workers and the families and loved ones they go home to, as well as the greater Hawaii community; and

**Whereas**, Hawaii's construction industry is heavily regulated by federal, state, and local governments regarding what can and cannot take place on a jobsite, we, the undersigned, hereby commit to the following practices, at a minimum, in order to prevent the introduction and spread of the coronavirus (COVID-19):

- |   |  |
|---|--|
| <p><b>PERSONAL RESPONSIBILITIES</b></p> <ul style="list-style-type: none"> <li>Workers with CDC designated symptoms, such as fever, cough, and shortness of breath, are to stay home and not report to work. Workers exhibiting these symptoms are to be sent home immediately.</li> <li>In addition to other personal protective equipment (PPE), every person on the jobsite must wear safety glasses or a face shield and are encouraged to wear doff/tieback face masks.</li> <li>Workers are encouraged to bring their own water containers for their personal use only. Bottled water may be provided as appropriate.</li> <li>Personal tools are not to be shared.</li> </ul> <p><b>SOcial DISTANCING</b></p> <ul style="list-style-type: none"> <li>All workers are to maintain six feet of separation, where possible.</li> <li>No more than 10 people shall gather when a meeting is required, even when conducted outside.</li> <li>Stacking of trades in the same area is to be avoided, whenever possible.</li> <li>Items such as tools, tablets, pens, and other personal items should not be shared; shared items must be sanitized between uses.</li> </ul> | <p><b>HAND-WASHING</b></p> <ul style="list-style-type: none"> <li>Hand-washing facilities with soap are to be provided in easily accessible locations throughout the jobsite. Where no washing facilities are available, workers should be provided with hand sanitizer containing at least 60% ethyl alcohol.</li> <li>Workers are encouraged to wash hands at breaks and as frequently as possible.</li> </ul> <p><b>HOISTS AND ELEVATORS</b></p> <ul style="list-style-type: none"> <li>The maximum number of occupants on hoists and elevators is to be limited.</li> <li>The hoist gate will only be opened and closed by the hoist operator.</li> <li>Hoists and elevators are to be sanitized daily.</li> </ul> <p><b>COMMUNICATION</b></p> <ul style="list-style-type: none"> <li>Signage is to be placed at the entrances to jobsites and in other prominent areas barring employees with COVID-19 symptoms, listing CDC recommendations, and encouraging good personal hygiene practices, like staying home when sick, and coughing and sneezing etiquette.</li> </ul> |
|---|--|

#### GCA COVID-19 TASK FORCE



#### LABOR UNIONS



#### SIGNATORIES

- |   |   |   |  |   |  |
|---|---|---|--|---|--|
| <p>Affiliated Construction<br/>Air Central<br/>Alan Shintani, Inc.<br/>Allied Construction<br/>Aloha Sheet Metal<br/>Alpha, Inc.<br/>American Electric<br/>Arta Poulson General Contracting<br/>Armstrong Builders<br/>Atlas Construction<br/>Atlas Insurance Agency<br/>Avalon Group<br/>B&amp;C Trucking<br/>Barker Kappella Construction<br/>Baschilde Roofing<br/>Barlen Consulting<br/>Black Plumbers<br/>Blazing Technology<br/>BMK Construction<br/>Boyd Construction Maui<br/>Bruce Matson Company<br/>Cacho Valley Electric<br/>CarDe Supply<br/>Civil Mechanical Contractor</p> | <p>Commercial Roofing &amp; Waterproofing<br/>Constructors Hawaii<br/>Contech Engineering Hawaii<br/>CWAlA<br/>DM Pacific<br/>Dorvin D. Lels Co.<br/>Dynatek<br/>Eagle Interiors<br/>Earthworks Pacific<br/>ECC Hawaii<br/>eDesign Group<br/>ENPRO Environmental<br/>Envirovet<br/>Floor Technologies of Hawaii<br/>Foundations Hawaii<br/>GreenMax Construction<br/>Glover Honsador<br/>Goodfellow Bros.<br/>GP Roadway Solutions<br/>GPRM Prestress<br/>Graham Builders<br/>Graham Builders<br/>Cacho Valley Electric<br/>GSI Companies<br/>Haas Insulation</p> | <p>Hawaii Plumbing Group<br/>Hawaii Works<br/>Healani Land Company<br/>Hearwood Pacific<br/>Helde &amp; Cook<br/>Helix Electric<br/>Henry's Equipment<br/>Homeworks Construction<br/>HPM Building Supply<br/>HSI Mechanical<br/>Integrated Security Technologies<br/>Maintenance<br/>Island Landscaping and Maintenance<br/>Island Signal &amp; Sound<br/>Jade Painting<br/>Joe W. Glover, Ltd.<br/>Jayar Construction<br/>JD Painting &amp; Decorating<br/>JJS Construction<br/>Kalkor Construction<br/>Kala Glass Co.<br/>Kauai Nursery &amp; Landscaping<br/>Kitzap Construction<br/>Klopfenstein's Lighting</p> | <p>Koge Engineering &amp; Construction<br/>KPRS Hawaii Construction<br/>La'au Structures<br/>Landon Construction<br/>Lawson &amp; Associates<br/>Lewitt &amp; Mann Plastering and Drywall<br/>Mark Development<br/>Maryl Group<br/>Matson<br/>Maui Disposal Co.<br/>Maui Waterscapes<br/>Maxum Construction of Hawaii<br/>McClone Construction Co.<br/>MD Restoration Maui<br/>Mega Construction<br/>Mess &amp; Associates<br/>Nan Inc.<br/>Narito Sheet Metal &amp; Mechanical<br/>National Concrete Sawing<br/>Oahu Metal &amp; Glazing<br/>Office Pavilion Hawaii<br/>Pacific AquaScapes<br/>Pacific AquaTech</p> | <p>Pacific Blue Construction<br/>Pacific Pile &amp; Crane<br/>Pacific Pipe<br/>Pacific Pool &amp; Spa<br/>P.B. Sullivan Construction<br/>PMJ Builders<br/>Premier Restoration Hawaii<br/>Pro Plumbing &amp; Solar<br/>PVT Land Company<br/>Quatified Plumbing<br/>Quality General<br/>Raynor Hawaii<br/>Road Builders<br/>Rens Construction Corp.<br/>Resandin<br/>S&amp;M Sakamoto<br/>Shimmick-Traylor Granite<br/>Shioi Construction<br/>Simpson Strong-Tie<br/>SSFM International<br/>Stanford Carr Development<br/>Starcom Builders<br/>Statewide General Contracting &amp; Construction</p> | <p>Su-Mo Builders<br/>Sun Construction<br/>Swiftnetron<br/>TAT Electric<br/>Takama Construction<br/>The Audio Visual Company<br/>The Electrical Construction Company<br/>Tile Warehouse<br/>Tokunaga Masonry<br/>TOMCO Corp.<br/>Tommy S. Toma Contractor, Inc.<br/>Trade Publishing<br/>Tilton<br/>Truth Excavation<br/>Unlimited Construction Services<br/>Viking Advanced Finishes<br/>Viking Construction<br/>Willlocks Construction Corp.<br/>Yasuhara Drywall<br/>Zelitsky Company</p> |
|---|---|---|--|---|--|

**TILE CONTRACTORS  
ASSOCIATION OF HAWAII**

**Subcontractors Association of Hawaii  
30th Annual Conference\*\***

**Thursday, October 1, 2020 to  
Sunday, October 4, 2020  
Four Seasons Ko'olina**

**Contact:  
Cheryl Lewis  
clewis@hawaiiantel.net  
Phone: (808) 537-5619 Fax: (808) 533-2739**



**\*\*Subject to change due to  
COVID-19 government restrictions.**



**The IMI is planning a Contractor College in 2021 for two days to address the topics below. We will keep you updated on the proposed date.**

- **Estimating / Project Management**
- **Quality Control / Quality Assurance and the performance of the Building Enclosure**
- **Business Operations, Business Opportunities**
- **Health, Safety and Legal Issues**
- **Sustainable Masonry Certification Program (SMCP)**

**We are also in discussion to have our TCAH participating signatory members visit their training facility in Baltimore in 2021. More to come!**



95-1030 Meheula Parkway #892711, Mililani, HI 96789  
Phone: (808) 295-7064 | Fax : (808) 888-6662  
[www.tilehawaii.com](http://www.tilehawaii.com)



# TILE CONTRACTORS ASSOCIATION OF HAWAII

## S & K Marketing Group LLC

Welcome to our new member!

S&K Marketing Group, LLC is a “Construction Solutions” Architectural and Products Representative. PROTECTO WRAP (Anti-Fracture/Sound Control Membranes), and Exterior Deck Waterproofing System over living space for tile and stone. HYDRO-BLOK, easiest, quickest and most user-friendly way to build a water-proof shower system or tub surround. Pre-Sloped Pans, Linear Drains and Barrier Free.

### S & K Marketing Group, LLC

Mike Tuel

Hawaii Sales Manager

1194 Kamalu Road, Unit A

Kapaa, HI 96746-7718

808-594-7669

[miketuel100@gmail.com](mailto:miketuel100@gmail.com)

[www.sandkmarketinggroupllc.com](http://www.sandkmarketinggroupllc.com)

<http://protectowrap.com/>

<https://www.hydroblok.com/>



Protecto Wrap \* Hydro-Blok \* Seal Boss \* Enduro-Kote \* Keene Building Products \* Tegraseal \*  
Professional Products of Kansas \* AC Tech \* Realstone Systems \* GE \* Bostic \* GeoTree \*

**New Installation Videos now available** on the Hydro-Blok website: <https://www.hydroblok.com/hb-support/installation/>

Please contact us for more information on Hydro-Blok Shower Systems “The BETTER Shower System”

<https://www.hydroblok.com/>

Hawaii Local Representative: Mike Tuel; 808-594-7669; [miketuel100@gmail.com](mailto:miketuel100@gmail.com)

*Note: We are also available for webinars/on-line training and when safe, jobsite visits...*

#### Some Features and Benefits to Note:

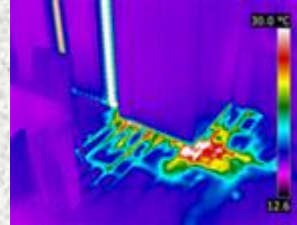
- 1- Cement is thicker on the pans which does less denting when trades walk on it prior to tile <https://www.hydroblok.com/products2/3wallboard/#3wallboard>
- 2- Everything you need is in the pan box...Drain and tools (never a missing drain, and always a fresh tool on the job site) <https://www.hydroblok.com/products/presloped-36-x-36-shower-pan/>
- 3- Curbs are coated in cement, not just primed foam <https://www.hydroblok.com/products2/4shower-curbs/#4shower-curbs>
- 4- Niches are solid foam and reinforced <https://www.hydroblok.com/products2/5niches-caddies/#5niches-caddies>
- 5- Cool triangle bench <https://www.hydroblok.com/products2/6shower-seats/#6shower-seats>
- 6- Hydro Blok has a 1/4" mesh, hence the stronger surface and has a **100% waterproof XPS foam core.** <https://www.hydroblok.com/products/36-x-60-x-14-wallboard/>
- 7- The benefits of the line drain; multiple options of locating it in the shower, back wall, side wall front at curb or tub replacement. The slope in the line drain helps prevent science projects from growing in the "trench", lightweight cover plate, and is adjustable in length, 73", or can be cut down to 24". <https://www.hydroblok.com/products/73-5-linear-drain-for-single-slope-shower-pans/>

# TILE CONTRACTORS ASSOCIATION OF HAWAII

## **S & K Marketing Group LLC Presents AIA Accredited Courses** Wednesday May 27 & Friday May 29, 2020 at 12:00 pm PST

### ***WHY FLOORS FAIL!***

**Presenter:** Jim Medina, Western Regional Manager for Protecto Wrap



**Bio:** Jim's background in construction stems from 29 years of experience in the industry. Realizing that flooring was his passion, he got certified in Flooring Forensics. This gave him a different outlook on every project and approach to installations. This unique insight of why floors fail in Residential, Commercial and Hospitality. His mission is to educate the current and future approaches to the changes in the industry and the answers to the "Why".

**Course:** "Why Floors Fail!" Credits for Course - **1 IDCEC, 1 AIA, 1HSW**

This is a lively class that explains the changes in the flooring industry and why flooring, from Tile to Stone, fail before installation to after installation. Jim Medina, Western Regional Manager for Protecto Wrap, takes the class through real failures from a Flooring Forensic Expert eyes. Key points that will be discussed will be:

Crack Isolation Membranes – Is it really needed?

What are the choices?

Does it matter?

Waterproofing – Why is a permeation rate of any concern?

What are the choices?

Does it really matter?

Sound Isolation Systems – How does noise effect my design?

What are the factors that should be followed for the best success?

**NOTE:** There is a registration question of an AIA Number. If you are not an AIA member, don't worry, just put 0000 in that space.

***May 27, 2020 12:00 PM Pacific Time (US and Canada)***

***Register in advance for this meeting:***

**<https://us02web.zoom.us/meeting/register/tZMpfuqhqDIrGdNMvSb54MbU79Hpqw2BNGjs>**

***May 29, 2020 12:00 PM Pacific Time (US and Canada)***

***Register in advance for this meeting:***

**[https://us02web.zoom.us/meeting/register/tZAldO2trjItG9YbeVU6pd\\_W3DVOy3nOi-XT](https://us02web.zoom.us/meeting/register/tZAldO2trjItG9YbeVU6pd_W3DVOy3nOi-XT)**

***After registering, you will receive a confirmation email containing information about joining the meeting.***



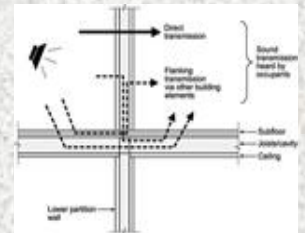
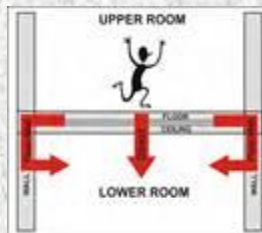
# TILE CONTRACTORS ASSOCIATION OF HAWAII

## Accredited Course

Thursday, May 28, 2020 at 12:00 pm Noon- PST

## ***SOUND ISOLATION FOR INTERIOR ENVIRONMENTS***

**Presenter:** Jim Medina, Western Regional Manager for Protecto Wrap



**Course:** “Sound Isolation for Interior Environments” Credits for Course - **1 IDCEC, 1 AIA, 1HSW**

This is a class explains how sound plays a integral part in the design of buildings. Jim Medina, Western Regional Manager for Protecto Wrap, takes the class through real failures from a Flooring Forensic Expert eyes. Key points that will be discussed will be:

Crack Isolation Membranes – Is it really needed?

What are the choices?

Does it matter?

Waterproofing – Why is a permeation rate of any concern?

What are the choices?

Does it really matter?

Sound Isolation Systems – How does noise effect my design?

What are the factors that should be followed for the best success?

**NOTE:** There is a registration question of an AIA Number. If you are not an AIA member, don't worry, just put 0000 in that space.

***When: May 28, 2020 12:00 PM Pacific Time (US and Canada)***

***Register in advance for this meeting:***

<https://us02web.zoom.us/meeting/register/tZAld-usrjMrH9aYS0Uvc4M7nF-Ma3hdHdwy>

***After registering, you will receive a confirmation email containing information about joining the meeting.***

# TILE CONTRACTORS ASSOCIATION OF HAWAII

## Schluter Systems Online Presentations



*Join Us for a 4 Part Online Presentation Series:  
Including Live Demonstrations.*

*\* Please be sure to register for each presentation individually.*

- **Moisture Management for Tiled Showers**

Tuesday May 26th

6:00 p.m. Pacific

Register in advance for this webinar:

[https://schluter.zoom.us/webinar/register/WN\\_RgNd3dK3Sq6bY90c3jqbXg](https://schluter.zoom.us/webinar/register/WN_RgNd3dK3Sq6bY90c3jqbXg)

- **Kerdi Line Drains and Uncoupling with Ditra**

Thursday May 28th

6:00 p.m. Pacific

Register in advance for this webinar:

[https://schluter.zoom.us/webinar/register/WN\\_ATzZLAY2Sk2\\_NDg1MKBI1g](https://schluter.zoom.us/webinar/register/WN_ATzZLAY2Sk2_NDg1MKBI1g)

- **Maximizing Tile Installations with Trim Profiles**

Tuesday June 2nd

6:00 p.m. Pacific

Register in advance for this webinar:

[https://schluter.zoom.us/webinar/register/WN\\_vitHn7CnQ-2kTycFR8b5cA](https://schluter.zoom.us/webinar/register/WN_vitHn7CnQ-2kTycFR8b5cA)

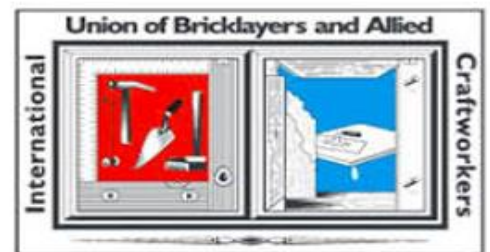
- **Floor Warming with Ditra Heat**

Thursday June 4th

6:00 p.m. Pacific

Register in advance for this webinar:

[https://schluter.zoom.us/webinar/register/WN\\_4osRH05eRxu11Ha9k4LksQ](https://schluter.zoom.us/webinar/register/WN_4osRH05eRxu11Ha9k4LksQ)





## ZOOM - Your Online Meeting Source

Due to social distancing, many of us have had to conduct online meetings. The most popular source is Zoom. Zoom provides tools for video and audio conferencing, collaboration, chat, and webinars through mobile devices, desktops, telephones, and room systems. To learn how to use Zoom, please click the link below. It has step by step instructions and a tutorial video (one minute). There are other online meeting apps such as Microsoft Teams and Google Meet.

<https://support.zoom.us/hc/en-us/articles/201362413-Scheduling-meetings>



### Schedule a Meeting

**Topic:**  
Grant MacLaren's Zoom Meeting

**Start:** Tue January 8, 2019 11:00 AM

**Duration:** 1 Hr 0 Min

**Time Zone:** (GMT-08:00) Pacific Time (US and Canada)

Recurring meeting

**Video**  
Host:  On  Off    Participants:  On  Off

**Audio**  
 Telephone     Computer Audio     Telephone and Computer Audio

Dial in from United States [Edit](#)

**Options**  
 List on Public Calendar [?](#)  
 Require meeting password

[Advanced Options](#) ▾

**Calendar**  
 Outlook     Google Calendar     Other Calendars



## **New Employer Tax Relief Credit Information from the IRS**

Please take time to visit the following IRS site. Please type this link into your browser and below are highlights.

<https://www.irs.gov/coronavirus-tax-relief-and-economic-impact-payments>

### **Credit for Sick and Family Leave**

An employee who is unable to work (including telework) because of coronavirus quarantine or self-quarantine or has coronavirus symptoms and is seeking a medical diagnosis, is entitled to paid sick leave for up to ten days (up to 80 hours) at the employee's regular rate of pay, or, if higher, the Federal minimum wage or any applicable State or local minimum wage, up to \$511 per day, but no more than \$5,110 in total.

### **Caring for someone with Coronavirus**

An employee who is unable to work due to caring for someone with coronavirus, or caring for a child because the child's school or place of care is closed, or the paid child care provider is unavailable due to the coronavirus, is entitled to paid sick leave for up to two weeks (up to 80 hours) at two-thirds the employee's regular rate of pay or, if higher, the Federal minimum wage or any applicable State or local minimum wage, up to \$200 per day, but no more than \$2,000 in total.

### **Care for Children Due to Daycare or School Closure**

An employee who is unable to work because of a need to care for a child whose school or place of care is closed or whose child care provider is unavailable due to the coronavirus, is also entitled to paid family and medical leave equal to two-thirds of the employee's regular pay, up to \$200 per day and \$10,000 in total. Up to ten weeks of qualifying leave can be counted towards the family leave credit.

### **Credit for Eligible Employers**

Eligible employers are entitled to receive a credit in the full amount of the required sick leave and family leave, plus related health plan expenses and the employer's share of Medicare tax on the leave, for the period of April 1, 2020, through December 31, 2020. The refundable credit is applied against certain employment taxes on wages paid to all employees. Eligible employers can reduce federal employment tax deposits in anticipation of the credit. They can also request an advance of the paid sick and family leave credits for any amounts not covered by the reduction in deposits. The advanced payments will be issued by paper check to employers.

### **Employee Retention Credit**

Eligible employers can claim the employee retention credit, a refundable tax credit equal to 50 percent of up to \$10,000 in qualified wages (including health plan expenses), paid after March 12, 2020 and before January 1, 2021. Eligible employers are those businesses with operations that have been partially or fully suspended due to governmental orders due to COVID-19, or businesses that have a significant decline in gross receipts compared to 2019. The refundable credit is capped at \$5,000 per employee and applies against certain employment taxes on wages paid to all employees. Eligible employers can reduce federal employment tax deposits in anticipation of the credit. They can also request an advance of the employee retention credit for any amounts not covered by the reduction in deposits. The advanced payments will be issued by paper check to employers.

